

EMF pollution: protecting Ca⁺⁺ ion's functions is a way to avoid biological effects !



Lecture by Marco F. PAYA MD. At N.Y.A.S (member of the New York Academy of Sciences) and scientific director for COMOSYSTEMS

ICNM July
1st, 2nd, 3rd
2016

COMOSYSTEMS S.L

C.M.O = Compensating Magnetic Oscillator

1. Intracellular calcium concentration may vary upon exposure to EMF that generates, by resonance phenomena, cascades of disturbances in the whole body.

Argumentary:

1- Calcium ion

The only way to avoid systemic biological effects due to EMF pollution is to protect the Ca⁺⁺ ion

- ion Ca⁺⁺ = common denominator to all cellular exchanges;
- ion Ca⁺⁺ = involved in all disturbed biological systems

If ELF modulation carrier waves are in the ion resonance frequency of Ca⁺⁺, the cell membrane becomes impermeable and the cell will show a slowed metabolism.

"Thickening of mucus ..."

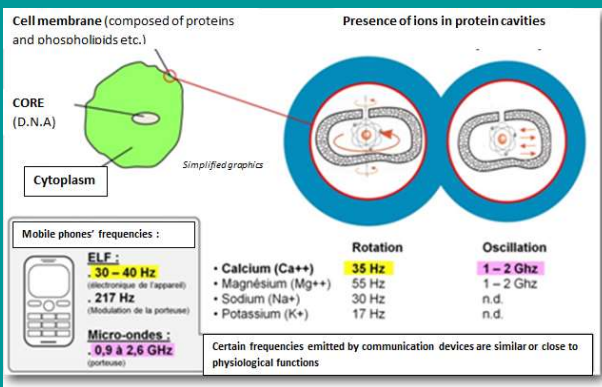
If ELF modulation carrier waves are at different frequencies and near the resonance frequency of Ca⁺⁺ it will generate: substitution of Ca⁺⁺ by K⁺

= increase in cell membrane permeability.

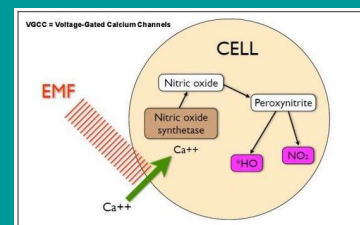
Consequences:

Intrusion of toxics in the Blood Brain Barrier

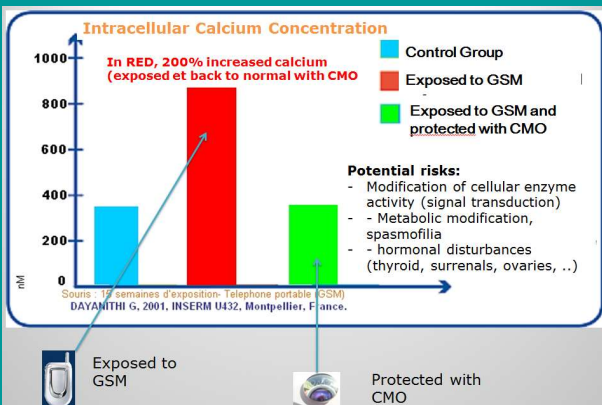
Very similar frequencies = Resonance / Flapping



Calcium Ion leakage produces free radicals (NO)



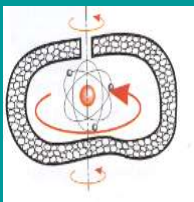
Intracellular Calcium Concentrations during exposure to EMF: 200 % increase



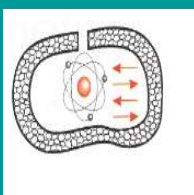
CONSEQUENCES AT BIOLOGICAL LEVELS:

Levels of damage

- Natural defenses (immune)
- Digestive system
- Hormones
- Neurons
- Reproduction
- Respiratory:
- Blood circulation

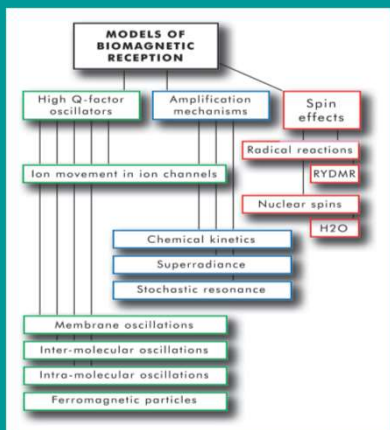


Ca⁺⁺ Cyclotronic Resonance = 35Hz & multiples



Ca⁺⁺ Cavity Resonance = 1 up to 2 GHz & multiples

2. There Is no EMF lower intensity limit with ions in resonance



Intensity is no the issue !

There is no lower EMF intensity limit for these (non-thermal) interferences with Ca⁺⁺ ion and other ions in the body (stochastic resonance and / or quantum interference).

